

REPAIR INSTRUCTION

BRITA INTENZA Water filter

| | | |
|----------|--|----------|
| 1 | SAFETY | 2 |
| 1.1 | Safety instructions | 2 |
| 2 | INSTALLATION | 3 |
| 3 | OPERATION | 3 |
| 3.1 | Brita Intenza® Water filtration system | 3 |
| 3.2 | Preparing and inserting the water filter cartridge | 4 |
| 3.3 | Determine the water hardness | 6 |
| 4 | COMPONENTS | 7 |
| 4.1 | Water filter | 7 |
| 5 | FUNCTIONS | 9 |
| 6 | REPAIR..... | 9 |
| 7 | FAULT DIAGNOSTICS | 9 |
| 8 | TECHNICAL SPECIFICATIONS | 9 |

1 SAFETY

1.1 Safety instructions



Important information:

- ▶ Use water filter only with tap water which is supplied by the water utility companies. This drinking water is checked and meets the legal requirements for drinking water quality.
 - ▶ Filter cold water only.
 - ▶ Clean water tank regularly.
 - ▶ If an instruction is received from the authorities that tap water must be boiled, the filtered water must also be boiled!
 - ▶ When the demand to boil water ends, the complete filter system must be cleaned and a new filter cartridge inserted!
 - ▶ In general it is recommended to boil tap water for specific groups of people (e.g. immunodeficient people, babies). This also applies to filtered water.
 - ▶ For reasons of hygiene the water filter cartridge contents are specially treated with silver. A small amount of silver that poses no health risk may be released into the water. This amount complies with the recommendations of the World Health Organization (WHO).
-



Risk of germs!

When the display indicates it is time to change the water filter, or at the latest after 2 months, the cartridge is no longer effective.

- ▶ For reasons of hygiene and so that there is no build-up of lime scale, replace water filter cartridge.
-



Note:

- ▶ Follow the information in the operating instructions for inserting or replacing the water filter!
 - ▶ Do not insert filter if a descaling indicator lights up on the appliance! First descale the appliance!
 - ▶ If the appliance is always operated with the water filter inserted, descale as a precaution once or twice a year!
-

2 INSTALLATION

3 OPERATION

3.1 Brita Intenza® Water filtration system



Appliances with a water filtration system can be operated with or without a water filter cartridge.

If the water filter is not to be used, the water filter cartridge must be taken out of the appliance and the appliance's basic settings must be changed.

3.1.1 Brita Intenza® Water filter cartridge



Using the Brita Intenza® water filter cartridge not only reduces the calcium content, but also filters substances which impair the aroma and taste the coffee drink, such as chlorine, out of the tap water.

Carbon hardness, heavy metals and other substances are reduced to protect the machine and improve drink quality. Important minerals and fluoride are retained.

3.1.2 Applicability of Brita Intenza® water filter cartridges

The water filtration system of the following fully-automatic coffeemakers is intended only for the operation of Brita Intenza® water filter cartridges:

| Bosch | Siemens | Neff | Gaggenau |
|--------------|----------------|-------------|-----------------|
| TES502x | TE502x | | |
| TES503x | TE503x | | |
| TES506x | TE506x | | |
| TES515x | TE509x | | |
| TES55x | TE515x | | |
| TES603x | TE525x | | |
| TES605x | TE603x | | |
| TES607x | TE605x | | |
| TES65x | TE607x | | |
| TES701x | TE701x | | |
| TES703x | TE703x | | |
| TES706x | TE706x | | |
| TES711x | TE711x | | |
| TES712x | TE712x | | |
| TES713x | TE713x | | |
| TES715x | TE716x | | |
| TES716x | TE717x | | |
| TES803x | TE803x | | |
| TES805x | TE806x | | |
| TES807x | TE809x | | |
| | TI903x | | |
| | TI905x | | |
| | TI907x | | |
| TCA71x | TK71x | C77V60x | CM250x |
| TCA73x | TK73x | C15KSx | CM450x |
| TCA76x | TK76x | C17KSx | CMP250x |
| TCC78Kx | TK76Kx | | |
| CTL636x | CT636x | | |

3.2 Preparing and inserting the water filter cartridge



Note:

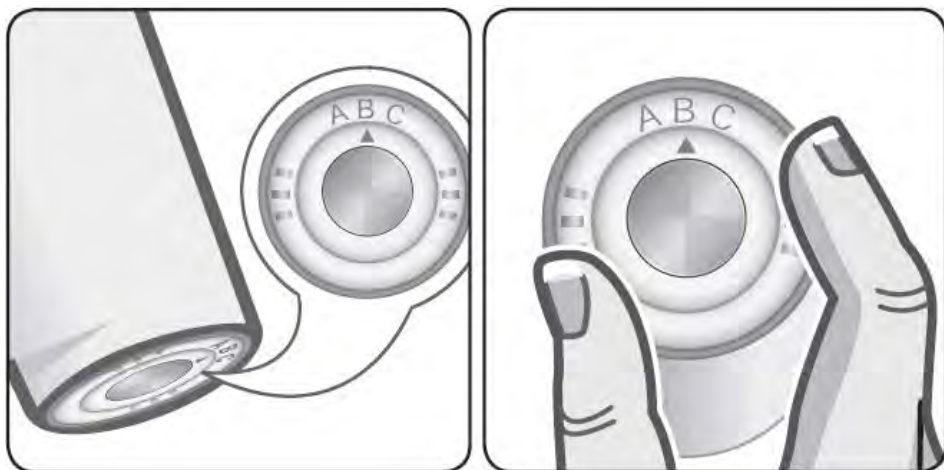
Brita Intenza® water filter cartridge must be rinsed in water before the first coffee or espresso is dispensed.

If the appliance is fitted with a new water filter cartridge, proceed as follows:

1. Remove protective film from water filter cartridge.

(Note: Water filter cartridge and inside of the film may be damp on account of condensation.)

2. Adjusting the bypass-ring.

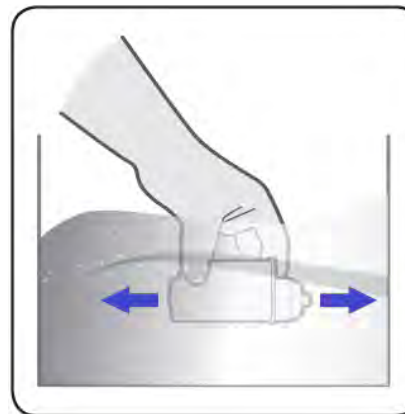


As the calcium content of water has a significant influence on the aroma and the 'crema' of the coffee drink, the BRITA INTENZA water filter cartridge has an aroma ring (bypass-ring) on the underside.

By turning this ring you can set the optimal aroma level (A, B or C) for the tap water (see: [Determine the water hardness](#)). Factory setting is level B.

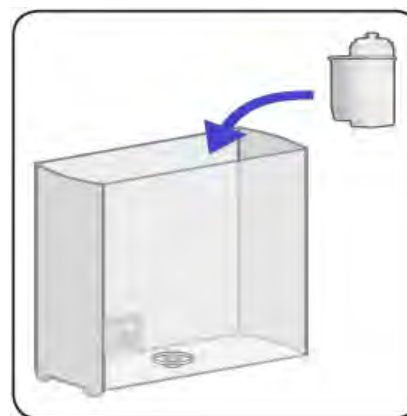
A water hardness of approx. 6 – 8° dH is optimum for the preparation of coffee and espresso, thereby ensuring that the full aroma can be developed (see: [Bypass-function](#)).

3. Hold the water filter cartridge under cold water, gently agitate and squeeze it to remove all the air bubbles.



The water filter cartridge is now ready for use.

4. Remove water tank from the appliance. Place the filter vertically on the water intake valve so it snaps into place noticeably. Make sure that the filter is installed securely on the valve.



If necessary, use the measuring spoon as auxiliary tool.

-
5. Fill up the water tank with fresh cold water up to the „max“ mark.



6. Re-insert the water tank and press it all the way down.
7. Change basic settings and activate the water filter.



Note:

By activating the water filter in the basic settings, a rinsing cycle will be started. Particulate material will be rinsed out and air will be removed from the water line system.

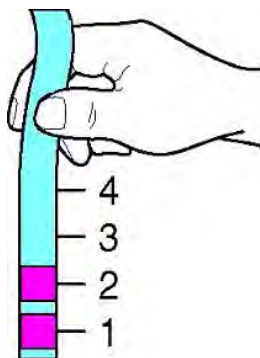
3.3 Determine the water hardness

Determine the water hardness using the enclosed test strip or ask the local water supplier.

Test strip for water hardness determination: Mat.-no.: 00056317

3.3.1 Determine the water hardness

- ▶ Remove test strip from the wrapper.
- ▶ Immerse it with the reaction zone in a glass of cold tap water for one second.
- ▶ Shake the strip to remove excess water.
- ▶ Wait for about 1 minute before checking the result



3.3.2 Settings

Setting A for water hardness 1 and 2

Setting B for water hardness 3

Setting C for water hardness 4

3.3.1.1 Water hardness

| Level | German (°dH) | French (°fH) |
|-------|--------------|--------------|
| 1 | 1 – 7 | 1 - 13 |
| 2 | 8 – 14 | 14 - 25 |
| 3 | 15 – 21 | 26 – 38 |
| 4 | 22 – 30 | 39 - 54 |

4 COMPONENTS

4.1 Water filter



- ▶ Follow the information in the operating instructions for inserting or replacing the water filter!
- ▶ Do not use a filter if a service program display lights up when the appliance is switched on! First descale the appliance!

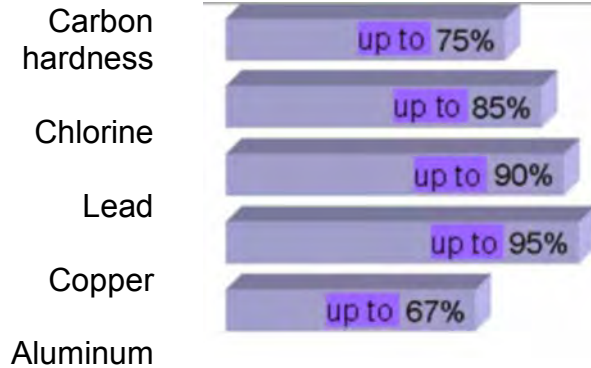
4.1.1 Filter specifications

Max. capacity: 125 liters at 10° dH

The filter filling consists of approx. 100 ml ion exchange resin and silvered activated carbon in the ratio 4:1.

Filter effect:

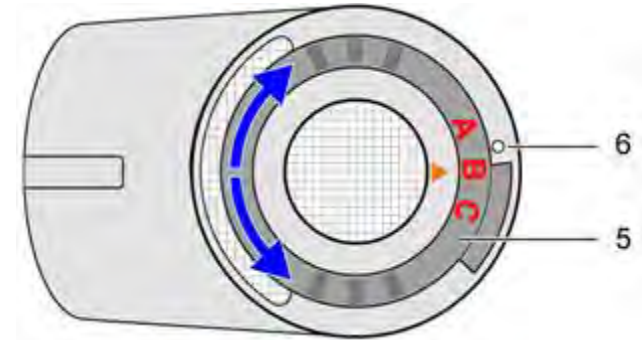
(Reduction if following substances are in the water)



4.1.2 Bypass function

To set the optimum water hardness of approx. 6– 8° dH an adjustable amount of unfiltered water can be mixed through the opening (6) with the out flowing, filtered water.

To do this, turn the ring (5) on the underside of the filter cartridge.



4.1.2.1 Settings

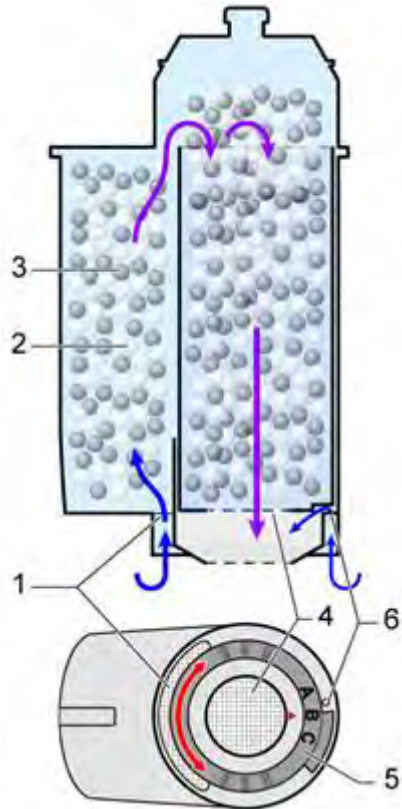
Setting A for water hardness 1 and 2

Setting B for water hardness 3

Setting C for water hardness 4

4.1.3 Filtration when drawing water

The water required for the preparation of coffee is filtered directly before use. The water is drawn in through filters **(1)** in the lower area of the filter cartridge, filtered through the granules **(2)** + **(3)** and drained through a filter **(4)** which is centered on the water tank valve.



4.1.4 4-Step filtration

Step 1:

Intensive preliminary filtration

In the first step the water flows through a fine filter fabric **(1)**. Suspended particles and contaminants are filtered out of the water.

Step 2:

Ion exchanger filtration

The ion exchanger **(2)** reduces lime and any occurring lead and copper.

Step 3:

Activated carbon filtration

The activated carbon **(3)** reduces substances which emit odors and impair taste and which may get into the water e.g. via the domestic installation.

Step 4:

Intensive final filtration

In the fourth step a special fine fabric filter **(4)** retains mixture particles.

5 FUNCTIONS

6 REPAIR

7 FAULT DIAGNOSTICS

8 TECHNICAL SPECIFICATIONS
